

Prasetya Abdi Persada
Earth Resources Engineering



COMPANY PROFILE

September 2024

Key Technical Persons



Prasetya Abdi Persada
Earth Resources Engineering



Key Technical Persons



Dwi Prasetya, BEng (Mining), MAusIMM, CPI-PERHAPI

Principal Mining Engineer & Reserves Estimation

Dwi completed his Bachelor Degree in Mining Engineering of ITB in 2002 and has over 21 years of experience in the mining industry (over 19 years in coal and around 2 years in copper and gold commodities). Dwi is a Competent Person for reporting Coal Reserve Estimates in accordance with JORC Code 2012 and is also a Competent Person Indonesia (CPI) for reporting the Coal Reserve Estimates in accordance with KCMI Code ("Kode Komite Cadangan Mineral Indonesia) 2017 edition. His main expertise includes pit optimization, integrated mine planning, including LOM/long-term, mid-term and short-term plan, financial modelling, reserves evaluation and reporting in accordance with either JORC or KCMI code. Dwi has also been involved in many studies on both coal and gold projects, including scoping/conceptual studies, pre-feasibility and feasibility studies, technical due diligence studies and independent technical reviews. In addition, Dwi is one of the KCMI Boards and is also the co-chair of PERHAPI's CPI Committee.



Nana Sumarna, BEng. (Mining), MAusIMM, CPI-PERHAPI

Principal of Exploration, Geological Modeling and Resources Estimation

Nana completed his Bachelor Degree in Mining Engineering of ITB in 2002 and has over 20 years of experience in the coal mining industry. Nana is a Competent Person for reporting Coal Resource and Reserve Estimates in accordance with JORC Code 2012 and is also a CPI for reporting the Coal Resource and Reserve Estimates in accordance with KCMI Code ("Kode Komite Cadangan Mineral Indonesia) 2017 edition. His main expertise includes exploration drilling supervision and planning, geological mapping, channel sampling supervision, geological modeling, resource estimation, pit optimization, mine planning, including LOM/long-term, mid-term and short-term plan, financial modelling, reserves evaluation and reporting in accordance with either JORC or KCMI Code. Nana has also been involved in many studies on coal projects, including scoping studies, technical due diligence studies and independent technical reviews. Nana is also active as the Coordinator for Continuing Professional Development (CPD) Program of PERHAPI's CPI Committee..



Hendrawan Agni Wicaksono, ST. MT.

Senior Geotechnical Engineer and Hydrogeologist

Hendrawan completed the Bachelor Degree in Mining Engineering of ITB in 2004 and has more than 18 years of experience in geotechnical, particularly related to mining sector. He has extensive experience in the stability problems that often occur in operating mines such as: pit wall stability and dump disposal stability. Hendrawan also holds a master degree in the hydrogeology that is related to environmental and geotechnical issues, including the waste water and hydro-chemistry issue. His main expertise includes Mine-slope geometry optimization, disposal instability occurrence, slope reinforcement, soft material stabilization, underground structure stability analysis, hydrogeology problems identification, contaminant analysis, and mine drainage design.



Andre Alis, BEng. (Mining), MAusIMM, CPI-PERHAPI

Principal Mining Engineer Associate

Andre completed the Bachelor Degree in Mining Engineering of ITB in 1988. He has over 30 years of extensive experience in mining industry, mainly in coal and tin commodities. Andre is a Competent Person for reporting Coal Reserve Estimates in accordance with JORC Code 2012 and KCMI 2017 edition. In the beginning of his career, he played a significant role in the development of PT Kaltim Prima Coal and Vietminho Energitama's (anthracite mine in northern Vietnam). Since 1995, he has been active as an independent mining consultant, providing services to national and foreign mining companies, which are mainly related to the feasibility of mining prospects assessment. Since 2007, he has diversified the activity as member of the audit committee for some national mining companies. In the last decade, through his activeness in PERHAPI's Competent Person Committee, he has been involved actively in application and dissemination of KCMI Code, including the efforts to increase the number of CPI as well as the development of the assessment methodology. During the same decade, activities were also focused on the deepening of mine planning & mining economics methodologies, including the education and teaching activities. Andre is also currently at the final stage of the MBA program at SBM ITB.

Our Services

Exploration Management

An integrated exploration program is a key success in the development of mining project. This program will help cut the cost and increase the project efficiency at its early stage. PAP's team have extended experiences in managing a comprehensive exploration program for coal and mineral commodities at various geological settings. Our key services are as follows:

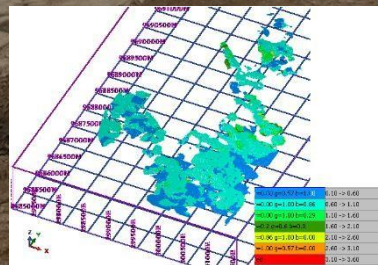


- Base mapping;
- Structural mapping;
- Sub-surface interpretation; based on desk study and outcrop findings;
- Exploration holes determination; and
- Drilling supervision in compliance with JORC and KCMI Standards

Geological Modelling & Resources Statement

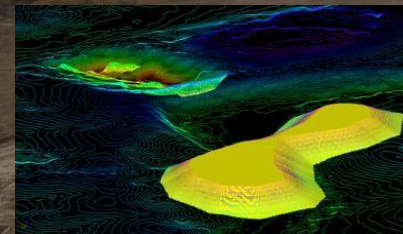
Geological modelling has been widely used to better understand the subsurface circumstances of a coal or mineral deposit. Our experienced well site geologists and the geological modellers combine their skills in the geological interpretation of the deposits with the application of innovative modelling software to construct dynamic 3D geological model. Our key services include:

- Verification and validation of detailed exploration database;
- Geostatistical analysis;
- Geological modelling using industrial standard softwares;
- Resource Statement in accordance with public reporting guidelines (KCMI and JORC)



Reserves Statement

Reserves estimation is very critical for a mining project. It reflects the long term technical and economic viability of the mined deposits. Our experts have extended relevant experiences including:



- Pit optimization using different approaches, such as block ranking stripping ratio and Lerch-Grossman algorithm;
- Conceptual and detailed practical mine design;
- Comprehensive life of mine plan, including mining production scheduling, assessment of mining equipment, waste material balance, stage design plan, and water management plan;
- Project financial valuation; and
- Reserves Statement in accordance with KCMI or JORC

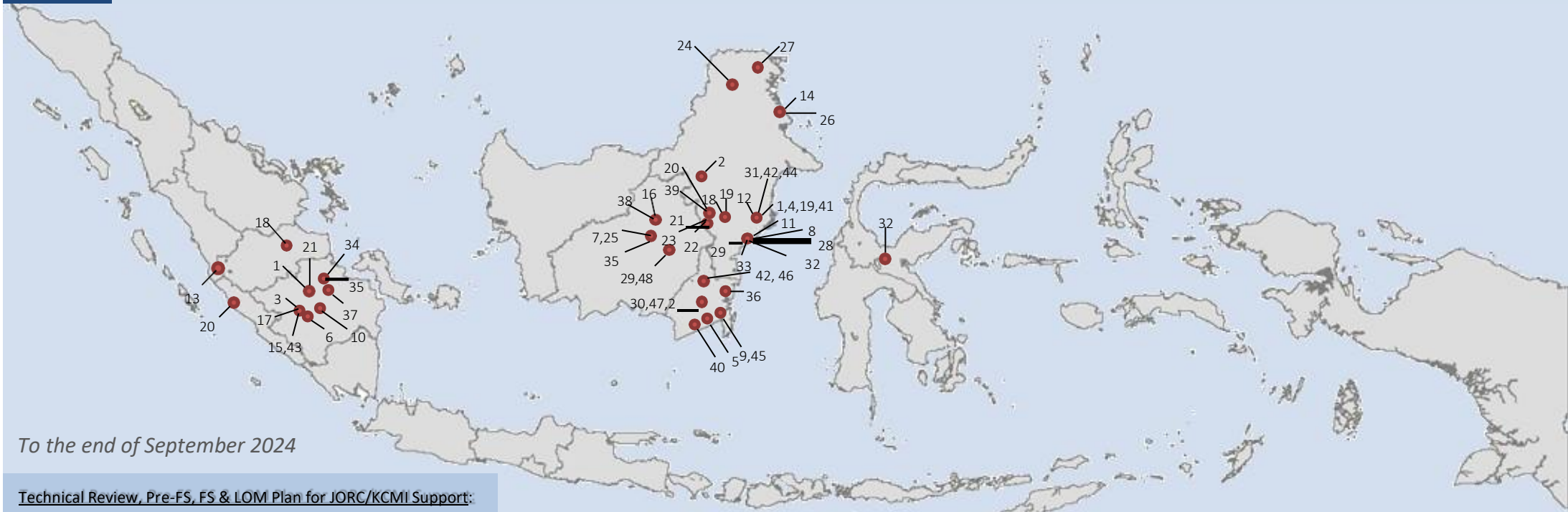
Geotechnical Investigation and Hydrogeology Analysis

Geotechnical and hydrogeology are critical inputs in the technical evaluation of a mining project, and become big concern in the mining operation. Following relevant services are provided to our client:



- Geotechnical site investigation;
- Geotechnical site monitoring;
- Pit slope and disposal stability analysis;
- Slope reinforcement and stabilization;
- Digability, Ripability and ground bearing capacity analysis;
- Hydrogeology site investigation such as: pumping test, falling head test, packer test; and
- Groundwater modeling

Our Services Across Indonesia



To the end of September 2024

Technical Review, Pre-FS, FS & LOM Plan for JORC/KCMI Support:

- | | |
|--------------------------------------------|----------------------------------------|
| 1. Baramulti Suksessarana (2024) | 9. Arutmin Indonesia (2017) |
| 2. Antang Gunung Meratus (2021, 2024) | 10. Inti Putra Kanaan (2017) |
| 3. Bumi Sekundang Enim Energi (2016, 2023) | 11. Danareksa (2017) |
| 4. Jembayan Muara Bara (2017, 2019, 2020) | 12. Sumber Bara Abadi (2019) |
| 5. Borneo Indobara (2023) | 13. Prima Perkasa Abadi (2018) |
| 6. Duta Bara Utama (2017) | 14. Delma Mining Corp (2018) |
| 7. Dayak Membangun Pratama (2022) | 15. Manambang Muara Enim (2019) |
| 8. Mahkota Propertindo (2017) | 16. Bukit Asam Prima (2019) |
| 43. Bukit Asam (2023, 2024) | 17. Cakra Bumi Energi (2019) |
| | 18. Bumi Bara Makmur Mandiri (2020) |
| | 44. KBB (2023) |
| | 45. Indocement Tunggul Prakarsa (2023) |

JORC and KCMI Resource & Reserve Reporting

- | | |
|--------------------------------------------|----------------------------------------|
| 19. Internasional Prima Coal (2022, 2023) | 26. Delma Mining Corp (2021) |
| 20. Injatama (2017) | 27. Mitrabara Adiperdana (2018) |
| 21. Madani Citra Mandiri (2016) | 28. Arutmin Indonesia (2018) |
| 22. Bangun Olah Sarana Sukses (2017, 2018) | 29. Sentika Mitra Persada (2018) |
| 23. Pratama Bersama (2017, 2018) | 30. Antang Gunung Meratus (2019, 2022) |
| 24. Duta Tambang Rekayasa (2018) | 31. Baramulti Suksessarana (2019) |
| 25. Dayak Membangun Pratama (2018) | 32. Mitra Kapuas (2020) |
| 47. Tunas Inti Abadi (2022,2023) | 33. Kaltim Jaya Mineral (2021) |

Geotechnical & Exploration Drilling Management and Analysis

- | | |
|----------------------------------------|-----------------------------------------------|
| 34. Wahana Rimba Lestari (2016) | 39. Arta Usaha Sarana (2018) |
| 35. PT. Tiga Daya Energi (2017) | 40. Rizqi Utama Indobara (2018) |
| 36. Kalimantan Energi Lestari (2017) | 41. Internasional Prima Coal (2022,2023,2024) |
| 37. Baramutiara Prima (2018) | 42. Chaido Mega Mineral (2022) |
| 38. Dayak Membangun Pratama (2018) | 48. Loa Haur (2024) |
| 46. Globalindo Prima Raya (2023, 2024) | |



HEAD OFFICE

Jl. Terusan Jakarta No. 190, Antapani Wetan, Antapani
Kota Bandung, Jawa Barat – 40291
Phone : +62 22-20529616
Email : papconsultants@gmail.com

Printed in Bandung, Indonesia © 2024



Please find our Contact Person in here

